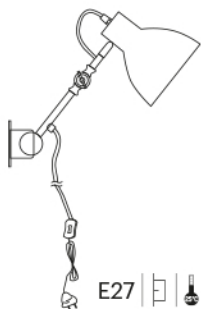


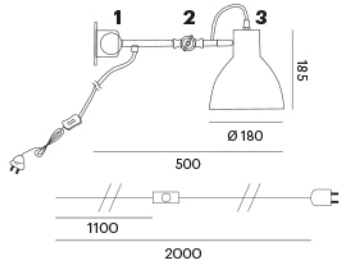
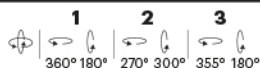


## IWO 1 W

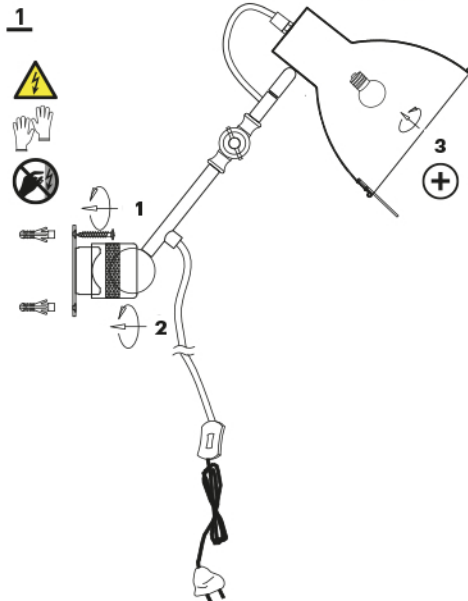
### Montageanleitung / Mounting Instruction



E27 IP 20



s fahr eines elektrischen Stromschlags! Netzspannung trennen.  
k of electric shock! Switch off the power supply.



2x



	Attenzione, rischio di scossa elettrica! Disconnettere la tensione di rete. k of electric shock! Switch off the power supply.
	Handschuhe tragen! Use gloves! Indossare i guanti!
	Schutzklasse 2 Protection class 2 Categoria di protezione 2
	Schutzart protection class classe di protezione
	Produkt spezifiziert für 25°C Umgebungstemperatur. Product is specified for 25°C ambient temperature. Prodotto indicato per temperatura ambiente di 25° C.
	LED nicht berühren! Do not touch the LED! Non toccare il LED!
	Wandaufbauleuchte Surface mounted wall luminaire Lampada da parete
	dreh-/schwenkbar swiveling and tilting orientabile e girevole
	drehbar swiveling girevole
	Nicht in den Hausmüll werfen! Do not dispose with domestic refuse! Non gettare nei rifiuti domestici!
	Zubehör accessories accessori